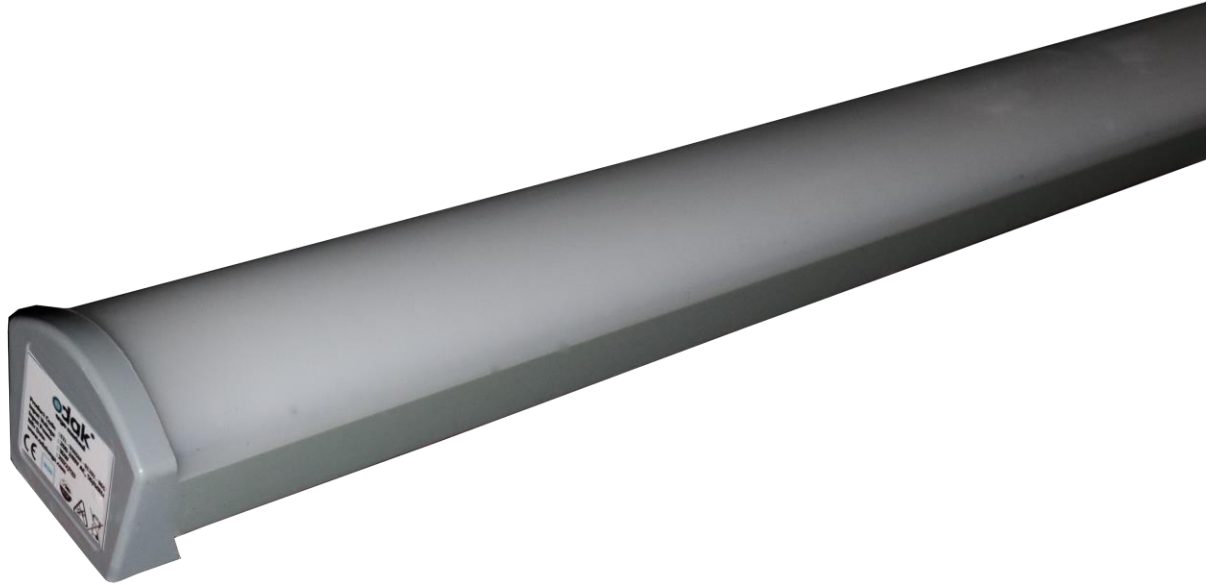


HYDRA Waterproof Luminaire 36 W



General Application Areas



Closed Parking lots



Industrial Kitchen



Auto Washings

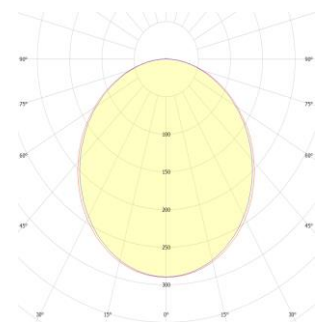


Indoor Sports Halls



Schools

Optical Beam Angles



110°

General Information

Ethaneaj Luminaires are designed to safeguard lighting fixtures from water and moisture in a variety of indoor settings, including industrial kitchens, bathrooms, car-carpet washing workshops, baths, laundries, and outdoor areas such as parking lots and gardens where water and moisture are present. The durable, slim, and stylish design of ethanol luminaires makes them quick and easy to install. As a direct alternative to traditional fluorescent luminaires, they offer a significant reduction in energy consumption.

HYDRA Waterproof Luminaire 36 W

Technical Specifications

Power	:36 W ± %3
Input Voltage	:200-240 V AC 50/60 HZ
Power Factor	:>0,95
Effectiveness Factor	:120 lm/W
Luminous Flux	:4320 lm
Light Angle	:110°
Color Temperature (CCT)	:3000K-4000K-5000K-6500K
Color Rendering Index (CRI)	:80+
IP Protection Class	:IP 65
Dimensions	:1200x50x60 mm
Weight	:0,65 kg
Test Standards	:EN 60598-1, EN 60529, EN 60598-2-1, IEC TR 62778, LM 79-18
Warranty Period	:3/5 Years (Optional)

Optical and Electrical Properties

Body	Polycarbonate Extrusion	CE Marking	Yes
Color Options	Gri RAL 7016	RoHS Compliance	Yes
Light Source	LED	Lifetime	≥60,000 Hours
Impact Resistance	IK 08	Throttling Options	1-10V, TRIAC, DALI
Total Harmonic Distortion	<%20	Operating Temperature	-25°/+55°C

Technical Drawing (Side View) and Connection Diagram



HYDRA Waterproof Luminaire 36 W

Standard Product Variations

Product Code	Power	Input Voltage	CCT	Luminous Flux	Effectiveness Factor	Light Angle	Dimensions	Weight
HYD-018SM-01101-830-0000	18W	200-240 V AC 50/60 Hz	3000 K	1908 lm	106 lm/W	110°	600x50x60mm	0,4 kg
HYD-036SM-01101-830-0000	36W	200-240 V AC 50/60 Hz	3000 K	3816 lm	106 lm/W	110°	1200x50x60mm	0,65 kg
HYD-044SM-01101-830-0000	44W	200-240 V AC 50/60 Hz	3000 K	4488 lm	102 lm/W	110°	1200x50x60mm	0,65 kg
HYD-065SM-01101-830-0000	65W	200-240 V AC 50/60 Hz	3000 K	6630 lm	102 lm/W	110°	1500x50x60mm	0,85 kg
HYD-065SM-01101-840-0000	18W	200-240 V AC 50/60 Hz	4000 K	1980 lm	110 lm/W	110°	600x50x60mm	0,4 kg
HYD-044SM-01101-840-0000	36W	200-240 V AC 50/60 Hz	4000 K	3960 lm	110 lm/W	110°	1200x50x60mm	0,65 kg
HYD-036SM-01101-840-0000	44W	200-240 V AC 50/60 Hz	4000 K	4664 lm	106 lm/W	110°	1200x50x60mm	0,65 kg
HYD-018SM-01101-840-0000	65W	200-240 V AC 50/60 Hz	4000 K	7540 lm	116 lm/W	110°	1500x50x60mm	0,85 kg
HYD-065SM-01101-850-0000	18W	200-240 V AC 50/60 Hz	5000 K	2160 lm	120 lm/W	110°	600x50x60mm	0,4 kg
HYD-044SM-01101-850-0000	36W	200-240 V AC 50/60 Hz	5000 K	4320 lm	120 lm/W	110°	1200x50x60mm	0,65 kg
HYD-036SM-01101-850-0000	44W	200-240 V AC 50/60 Hz	5000 K	5104 lm	116 lm/W	110°	1200x50x60mm	0,65 kg
HYD-018SM-01101-850-0000	65W	200-240 V AC 50/60 Hz	5000 K	7540 lm	116 lm/W	110°	1500x50x60mm	0,85 kg
HYD-065SM-01101-865-0000	18W	200-240 V AC 50/60 Hz	6500 K	2160 lm	120 lm/W	110°	600x50x60mm	0,4 kg
HYD-044SM-01101-865-0000	36W	200-240 V AC 50/60 Hz	6500 K	4320 lm	120 lm/W	110°	1200x50x60mm	0,65 kg
HYD-036SM-01101-865-0000	44W	200-240 V AC 50/60 Hz	6500 K	5104 lm	116 lm/W	110°	1200x50x60mm	0,65 kg
HYD-018SM-01101-865-0000	65W	200-240 V AC 50/60 Hz	6500 K	7540 lm	116 lm/W	110°	1500x50x60mm	0,85 kg

Product Variations with Emergency Kit

Product Code	Power	Input Voltage	CCT	Luminous Flux	Effectiveness Factor	Light Angle	Dimensions	Weight
HYD-018SM-01101-830-02E3	18W	200-240 V AC 50/60 Hz	3000 K	1908 lm	106 lm/W	110°	600x50x60mm	0,4 kg
HYD-036SM-01101-830-02E3	36W	200-240 V AC 50/60 Hz	3000 K	3816 lm	106 lm/W	110°	1200x50x60mm	0,65 kg
HYD-044SM-01101-830-02E3	44W	200-240 V AC 50/60 Hz	3000 K	4488 lm	102 lm/W	110°	1200x50x60mm	0,65 kg
HYD-065SM-01101-830-02E3	65W	200-240 V AC 50/60 Hz	3000 K	6630 lm	102 lm/W	110°	1500x50x60mm	0,85 kg
HYD-065SM-01101-840-02E3	18W	200-240 V AC 50/60 Hz	4000 K	1980 lm	110 lm/W	110°	600x50x60mm	0,4 kg
HYD-044SM-01101-840-02E3	36W	200-240 V AC 50/60 Hz	4000 K	3960 lm	110 lm/W	110°	1200x50x60mm	0,65 kg
HYD-036SM-01101-840-02E3	44W	200-240 V AC 50/60 Hz	4000 K	4664 lm	106 lm/W	110°	1200x50x60mm	0,65 kg
HYD-018SM-01101-840-02E3	65W	200-240 V AC 50/60 Hz	4000 K	7540 lm	116 lm/W	110°	1500x50x60mm	0,85 kg
HYD-065SM-01101-850-02E3	18W	200-240 V AC 50/60 Hz	5000 K	2160 lm	120 lm/W	110°	600x50x60mm	0,4 kg
HYD-044SM-01101-850-02E3	36W	200-240 V AC 50/60 Hz	5000 K	4320 lm	120 lm/W	110°	1200x50x60mm	0,65 kg
HYD-036SM-01101-850-02E3	44W	200-240 V AC 50/60 Hz	5000 K	5104 lm	116 lm/W	110°	1200x50x60mm	0,65 kg
HYD-018SM-01101-850-02E3	65W	200-240 V AC 50/60 Hz	5000 K	7540 lm	116 lm/W	110°	1500x50x60mm	0,85 kg
HYD-065SM-01101-865-02E3	18W	200-240 V AC 50/60 Hz	6500 K	2160 lm	120 lm/W	110°	600x50x60mm	0,4 kg
HYD-044SM-01101-865-02E3	36W	200-240 V AC 50/60 Hz	6500 K	4320 lm	120 lm/W	110°	1200x50x60mm	0,65 kg
HYD-036SM-01101-865-02E3	44W	200-240 V AC 50/60 Hz	6500 K	5104 lm	116 lm/W	110°	1200x50x60mm	0,65 kg
HYD-018SM-01101-865-02E3	65W	200-240 V AC 50/60 Hz	6500 K	7540 lm	116 lm/W	110°	1500x50x60mm	0,85 kg