



The use of UAVs with lighting functions in the industry is quite common. It is planned to provide 24/7 uninterrupted and mobile lighting in various areas, from nighttime emergency rescue, firefighting, public safety and infrastructure works to military operations.

It is critical that the system is easily portable for the search and rescue activities of the gendarmerie traffic teams in the wreckage of the vehicle rolled into the stockade, the status of the derailed wagons of the railway maintenance teams, or the operations of the police teams at the water's edge. Developed for such needs, the G7L model, which has a total equipment weight of less than 30 kg, is designed to be unaffected by harsh weather conditions with its Level 10 rain resistance and Class 6 wind resistance. The system has a 1000W LED light group that can hang in the air for a long time thanks to its uninterruptible power supply and provides high brightness with 120,000 lumens.

The UAV, named G7L, can reach a flight altitude of up to 50 meters. Connected to the power unit by cable, the system can be controlled by its handheld remote control, which can be operated with one hand without the need for a professional UAV pilot; It offers one-button take-off and landing. When the external power is cut off, the internal backup battery continues to supply energy for about 5 minutes; In the meantime, the system gives an audible alarm and the cable can be collected safely thanks to the automatic cable winding device. In cases where there is no 220V AC mains voltage, the backup battery support ends at the end of the fifth minute. The power unit should be kept in a suitable location with airflow for efficient operation.

# G7L Tethered Lighting UAV

## Aircraft Specifications

Product Name	:G7L
Flight Altitude (m)	:50m
Automatic Takeoff	:No
Automatic Landing	:Yes
Emergency Landing Mode	:Yes, Automatic
Take-off Weight (kg)	:1.2 kg
Dimension (mm)	:405 x 405 x 138 mm
Wind - Rain Class	:Class6 (10,8~13,8m/sn) - Class10 (10L/sn)
Maximum Working Height (Altitude)	:4500 m
Operation Possibility	
Operating Temperature (°C)	:-20°C - +50°C



## Lighting LED Module Features

Lighting Unit Power (W)	:1000W
Lighting Source	:Power LED
Color Temperature(CCT)	:6500K
Color Rendering Index	:>70
Lighting Area	:>8000m2



## Control Controller Features

Contact Type / Cable Length	:Wired / 1 meter
Flight Control	:Yes
Satellite Number Control	:Yes
Lighting On/Off	:Yes
Engine On / Off	:Yes

## Power Unit Specifications

Input Voltage (AC)	:AC 220V ±10% 50/60HZ
Max. Power (W)	:1300W
Assembly Time / Workspace	:5dk / 5m <sup>2</sup>
Reel Winding - Release	:Yes, Automatic
Cable Length	:50m
Weight (gr)	:30000 gr
Dimension (mm)	:645 x 485 x 330 mm

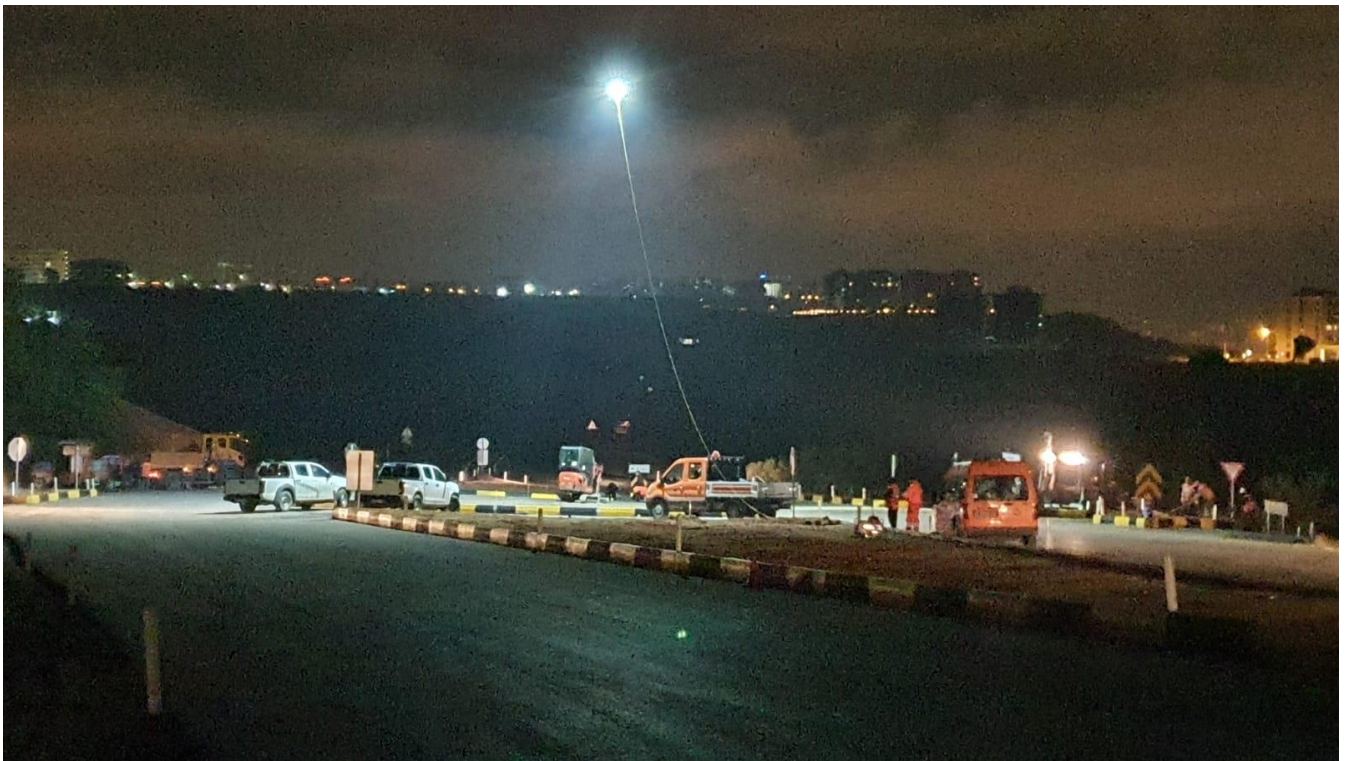


## Product Order Information

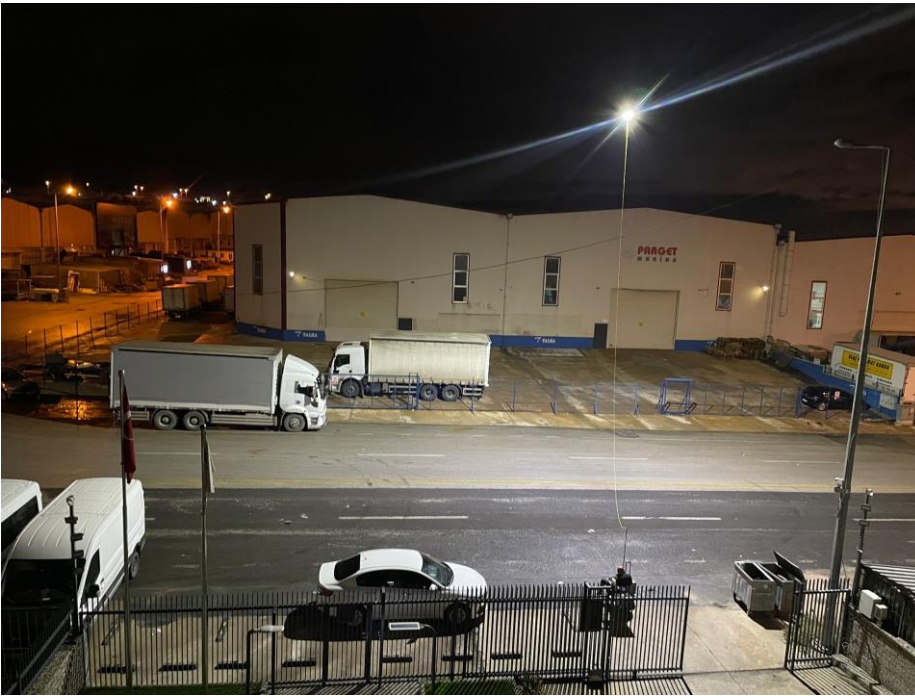
Product Code	Power	Input Voltage	CCT/CRI	Departure Weight	Flight Duration	Dimensions	Cable Length
G7L-04-RW-24-TET-50	1300W	220 VAC 50-60 Hz	6500K / 70 CRI	1200gr	24s	645 x 485 x 330 mm	50 m

- *Product average maximum power is 1.5 kW. You can use a generator or portable power station where there is no mains voltage.*
- *You can use the product for at least 1 hour with a 1200W Lithium Battery portable power station.*
- *You can also use it without interruption with a gasoline generator with a continuous power of at least 1.2kW. We recommend a generator due to price/performance and long-term use.*

## Application Visuals



## Lighting Test



In the illumination test conducted by raising our wired illuminated aircraft to an altitude of 10m (AGL), 294 lux was obtained on the ground, 136 lux was obtained at 15m (AGL) altitude, and 82 lux was obtained in the illumination measurement made while flying at 20m (AGL) altitude. The images of the results of the measurements made with the luxmeter at 10m, 15m and 20m are as follows.