

ANTARES COLOR Warehouse LED Projector

odak® R&D CENTER
smart city technologies

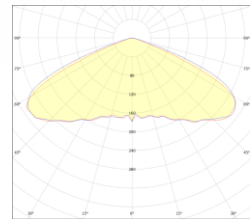


General Application Areas



Warehouse Lighting

Optical Beam Angle



20°-50°

General Information

ANTARES-COLOR Warehouse LED Floodlights are modern lighting solutions designed to meet the high lighting needs of warehouses and industrial areas, with high energy efficiency and long life. It provides significant energy savings compared to traditional lighting systems, reducing operating costs and providing sustainable use.

Thanks to their high-strength bodies and low power consumption, they can be used safely in harsh warehouse conditions. It offers wide-angle options that uniformly illuminate large areas, as well as narrow-angle, focused lighting alternatives for shelf spaces, loading areas and workstations. This increases visibility inside the warehouse, supports occupational safety and operational efficiency.

ANTARES-COLOR Warehouse LED Floodlights, which can be customized with different light distribution angles and lighting patterns, are an ideal lighting solution for logistics centers, warehouses, shipping areas and warehouses with high ceilings.

ANTARES COLOR Warehouse LED Projector

Technical Specifications

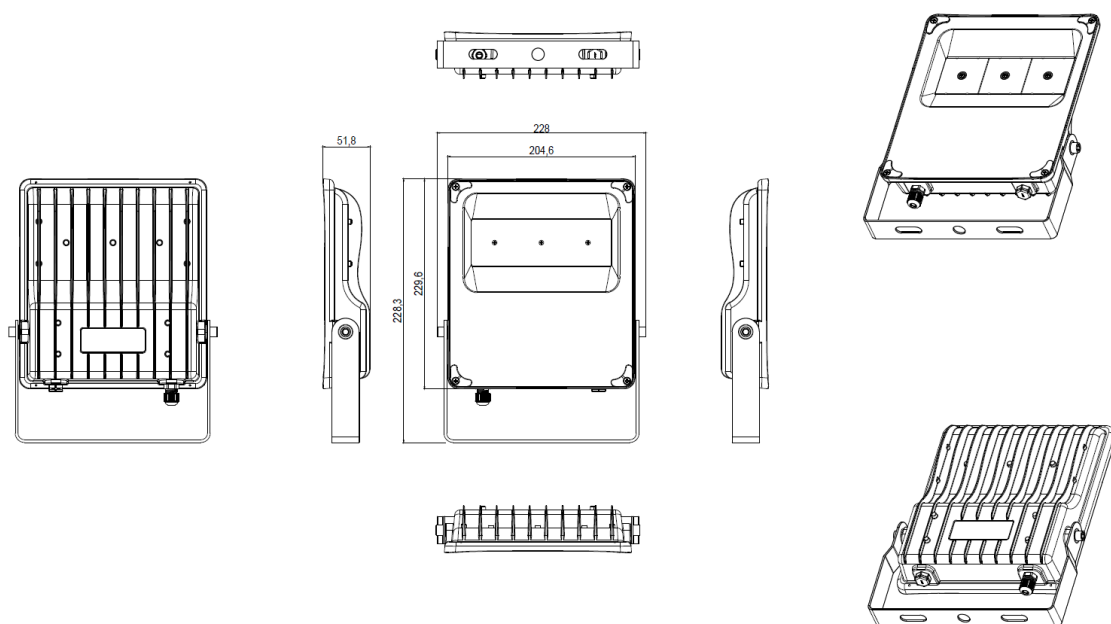
Power	:28W / 55W / 93W / 140W / 185W
Input Voltage	:200-240 V AC 50/60 HZ
Power Factor	:>0,95
Effectiveness Factor	:150 lm/W
Luminous Flux	:4200lm / 8250lm / 13950lm / 21000lm / 27750lm
Light Angle	:20°-50°
Color Temperature (CCT)	:3000K / 4000K/5000K/ 6500K
Color Rendering Index (CRI)	:80+
IP Protection Class	:IP 66
Dimensions	:28W: 228,3 x 228 x 51,8 mm / 55W: 364,3 x 278 x 51,8 mm / 93W: 394,5 x 393,5 x 56,6 mm / 140W: 445,4 x 392,5 x 56,8 mm / 185W: 497,5 x 392,5 x 58,8 mm
Weight	:1.5 kg / 2.5 kg / 4 kg/ 4.5 kg / 5.5 kg
Warranty Period	:3 Year

Optical and Electrical Properties

Body	Aluminum Injection	CE Marking	Yes
Color Options	RAL 9004	RoHS Compliance	Yes
Front Cover	Tempered Glass	Lifespan	≥60,000 Hours
Lens	PMMA	Throttling Options	1-10V, TRIAC, DALI
Light Source	LED	Operating Temperature	-25°/+55°C
Impact Resistance	IK 08- IK 10 (Optional)	Total Harmonic Distortion	<%20

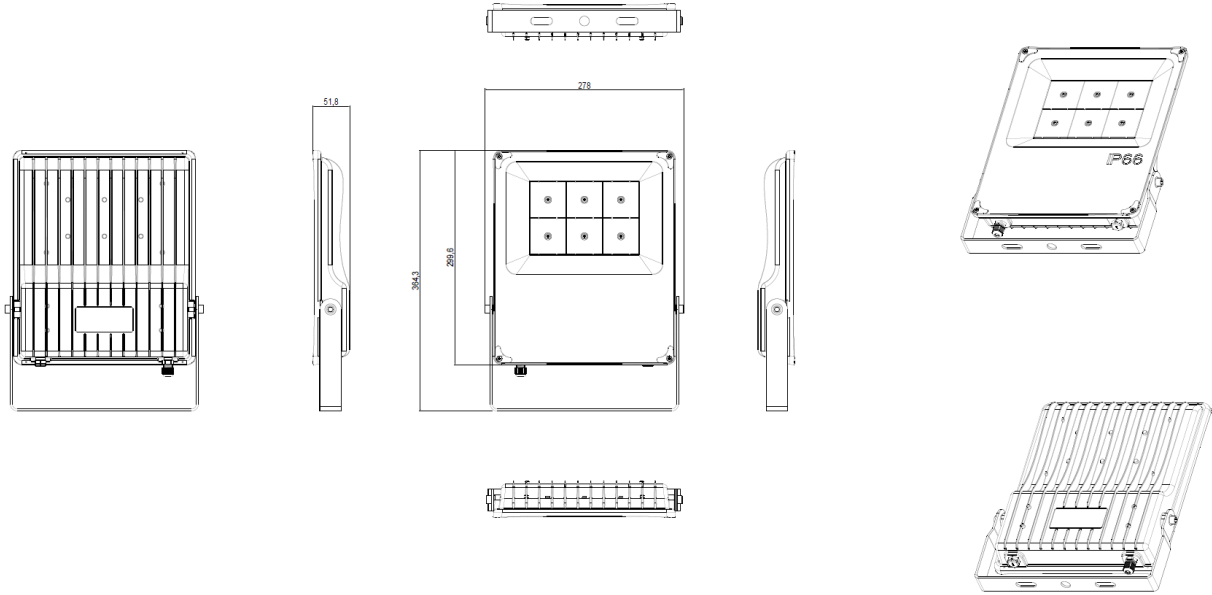
Technical Drawing (Side View) and Wiring Diagram

28W

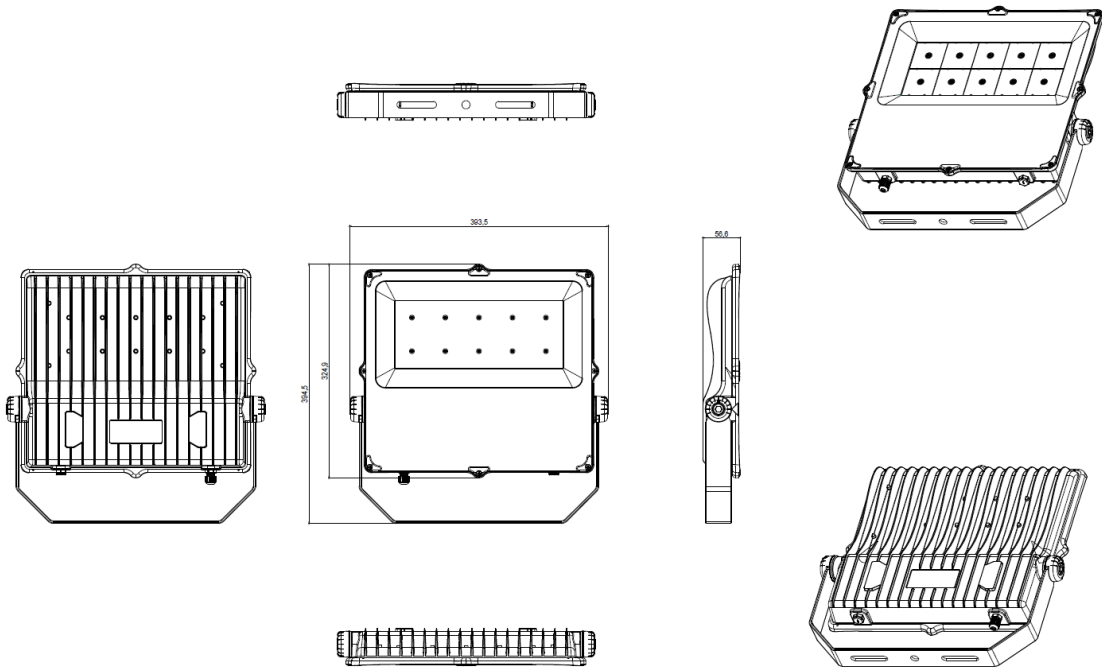


ANTARES COLOR Warehouse LED Projector

55W

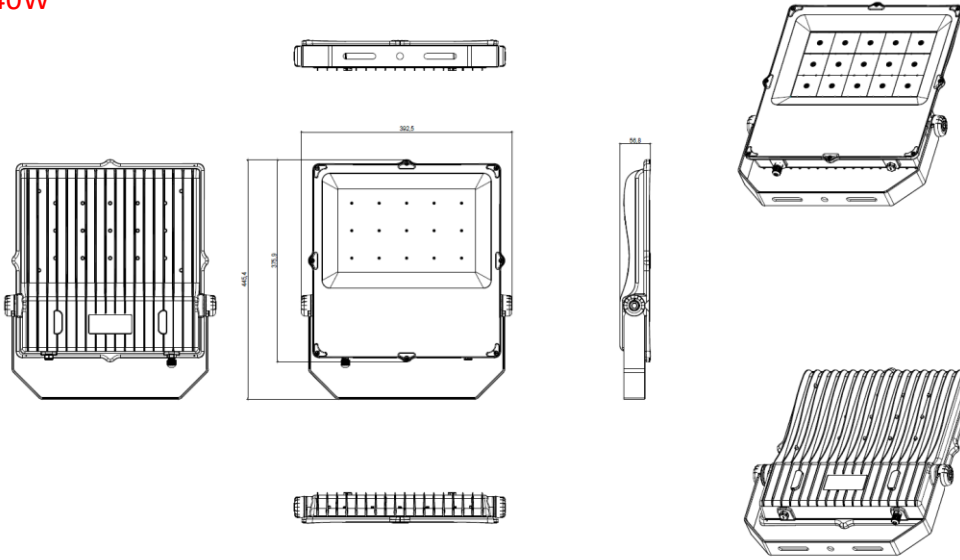


93W

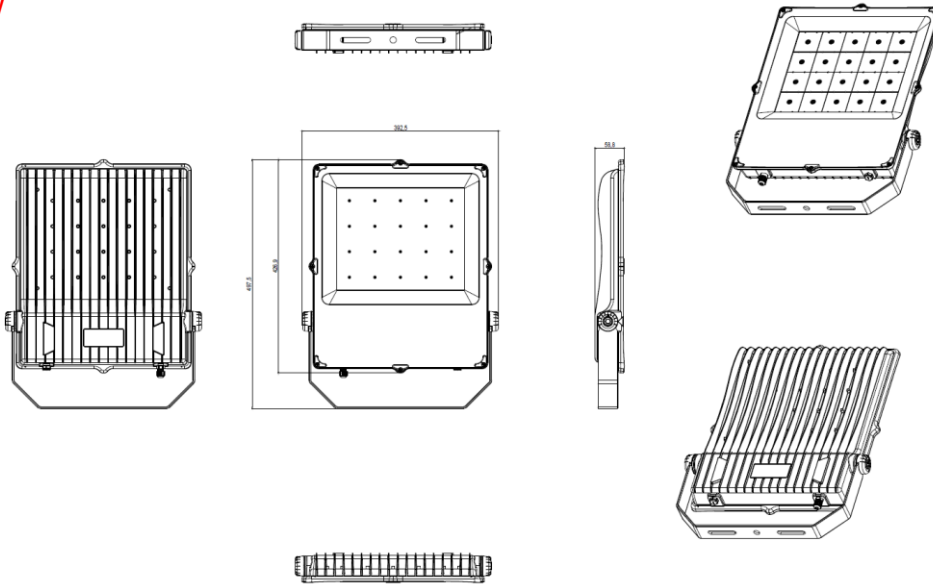


ANTARES COLOR Warehouse LED Projector

140W



185W



Product Variations

Product Code	Power	Input Voltage	Light Flux	Light Angle	Dimensions	Weight
AND-028SM-20502-750-9004	28W	200-240 V AC 50/60 Hz	4200lm	20°-50°	228,3 x 228 x 51,8 mm	1.5 kg
AND-055SM-20502-750-9004	55W	200-240 V AC 50/60 Hz	8250lm	20°-50°	364,3 x 278 x 51,8 mm	2.5 kg
AND-093SM-20502-750-9004	93W	200-240 V AC 50/60 Hz	13950lm	20°-50°	394,5 x 393,5 x 56,6 mm	4 kg
AND-140SM-20502-750-9004	140W	200-240 V AC 50/60 Hz	21000lm	20°-50°	445,4 x 392,5 x 56,8 mm	4.5 kg
AND-185SM-20502-750-9004	185W	200-240 V AC 50/60 Hz	27750lm	20°-50°	497,5 x 392,5 x 58,8 mm	5 kg