

# ANTARES-W LED Projector 142W

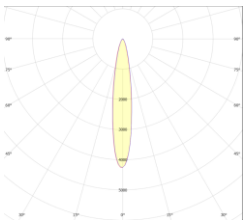
**odak**® R&D CENTER  
smart city technologies



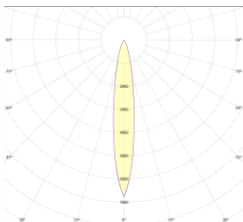
## General Application Areas



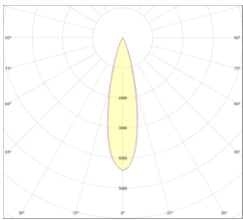
## Optical Beam Angles



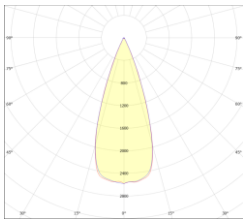
8°



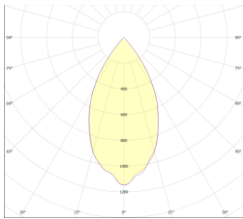
17°



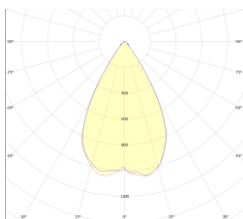
25°



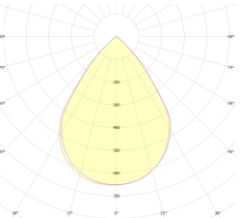
40°



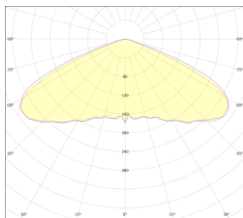
45°



60°



90°



110°

## General Information

ANTARES-W LED floodlights are a highly efficient and versatile solution for modern lighting needs, offering significant energy savings and a long lifetime compared to traditional lighting. LED floodlights are renowned for their durability and low power consumption, which contributes to reduced energy costs and a decreased environmental impact. This makes them well-suited for both commercial and residential applications. These products also enhance architectural aesthetics by adding visual appeal with narrow-angle or wide-angle/field lighting options that emphasize structural details. LED floodlights offer a variety of light distribution options and lighting distribution patterns, including narrow-angle spotlights and wide-angle lighting. This versatility allows them to provide customizable solutions for different environments and lighting requirements.

# ANTARES-W LED Projector 142W

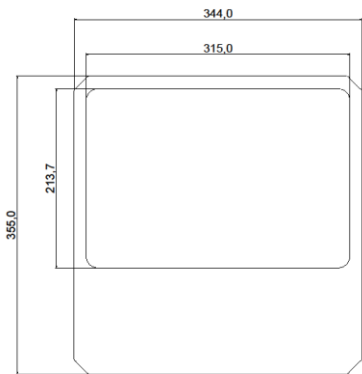
## Technical Specifications

Power	:142W
Input Voltage	:200-240 V AC 50/60 HZ
Power Factor	:>0,95
Effectiveness Factor	:120lm/W
Luminous Flux	:17040lm
Light Angle	:8°, 17°, 25°, 40°, 45°, °60°, 90°, 110°
Color Temperature (CCT)	:3000K /4000K/5000K/ 6500K
Color Rendering Index (CRI)	:80+
IP Protection Class	:IP 66
Dimensions	:355x344x65 mm
Weight	:4.5 kg
Warranty Period	:3 Year

## Optical and Electrical Properties

Body	Aluminum Injection Molding	CE Marking	Yes
Color Options	RAL 9004	RoHS Compliance	Yes
Front Cover	Tempered Glass	Lifetime	≥60,000 Hours
Lens	PMMA	Throttling Options	1-10V, TRIAC, DALI
Light source	LED	Operating Temperature	-25°/+55°C
Impact Resistance	IK 08- IK 10 (Optional)	Total Harmonic Distortion	<%20

## Technical Drawing (Side View) and Wiring Diagram



## Product Variations

Product Code	Power	Input Voltage	Luminous Flux	Light Angle	Dimensions	Weight
ANT-142SM-00082-850-9004	142 W	200-240 V AC 50/60 Hz	12480 lm	8°	355x344x65 mm	4.5 kg
ANT-142SM-00172-850-9004	142 W	200-240 V AC 50/60 Hz	12480 lm	17°	355x344x65 mm	4.5 kg
ANT-142SM-00252-850-9004	142 W	200-240 V AC 50/60 Hz	12480 lm	25°	355x344x65 mm	4.5 kg
ANT-142SM-00402-850-9004	142 W	200-240 V AC 50/60 Hz	12480 lm	40°	355x344x65 mm	4.5 kg
ANT-142SM-00452-850-9004	142 W	200-240 V AC 50/60 Hz	12480 lm	45°	355x344x65 mm	4.5 kg
ANT-142SM-00602-850-9004	142 W	200-240 V AC 50/60 Hz	12480 lm	60°	355x344x65 mm	4.5 kg
ANT-142SM-00902-850-9004	142 W	200-240 V AC 50/60 Hz	12480 lm	90°	355x344x65 mm	4.5 kg
ANT-142SM-01202-850-9004	142 W	200-240 V AC 50/60 Hz	12480 lm	120°	355x344x65 mm	4.5 kg