



UAVs with lighting functions are widely used in industry. It is planned to be used 24/7 uninterruptedly in various fields from the military sector to security forces and even search and rescue activities.

Gendarmerie traffic wants to carry the wreckage of a vehicle that has rolled into a ravine on the back of an all-terrain vehicle for search and rescue activities, while for determining the condition of a derailed train/wagon; the railway maintenance team wants the device to be carried on the back. Police search and rescue teams also want the option to carry the device on the back for vehicles or people who fall into the sea, rivers or ponds. Based on such needs, the G3L model has been modified and transformed into the G5L model, which is a design that can be carried on the back and will not be affected by rain, and put on the market. Just like the G3L, it has a 1kW power unit and 450W LED lighting module.

The UAV, named G5L, can reach an altitude of up to 28 meters. It can be flown with the control connected to the power unit. It provides one-handed control and management with its specially designed remote control without the need for a professional UAV pilot. When the power is cut off, energy can be provided from the battery for 5 minutes and thanks to this feature, the cable can be collected by automatic winding. In the absence of 220V AC mains voltage, it automatically shuts down at the end of the fifth minute. The power unit should be stored in a place with air flow like generators.

G5L Tethered Lighting UAV

Aircraft Specifications

Product Name	:G5L
Flight Altitude (m)	:28m
Automatic Takeoff	:No
Automatic Landing	:Yes
Emergency Landing Mode	:Yes, Automatic
Take-off Weight (kg)	:920 gr
Dimension (mm)	:L296 x W296 x H106
Wind - Rain Class	:Class6 (10,8~13,8m/sn) - Class10 (10L/sn)
Maximum Working Height (Altitude)	:4500 m
Operation Possibility	
Operating Temperature (°C)	:-20°C - +50°C



Lighting LED Module Features

Lighting Unit Power (W)	:450W
Lighting Source	:Power LED
Color Temperature(CCT)	:6500K
Color Rendering Index	:>70
Lighting Area	:>3000m2



Control Controller Features

Contact Type / Cable Length	:Wired / 1 meter
Flight Control	:Yes
Satellite Number Control	:Yes
Lighting On/Off	:Yes
Engine On / Off	:Yes

Power Unit Specifications

Input Voltage (AC)	:220-240V, AC 50/60 Hz
Max. Power (W)	:1100W
Assembly Time / Workspace	:5dk / 5m ²
Reel Winding - Release	:Yes, Automatic
Cable Length	:28m
Weight (gr)	:16000
Dimension (mm)	: 435*265*510

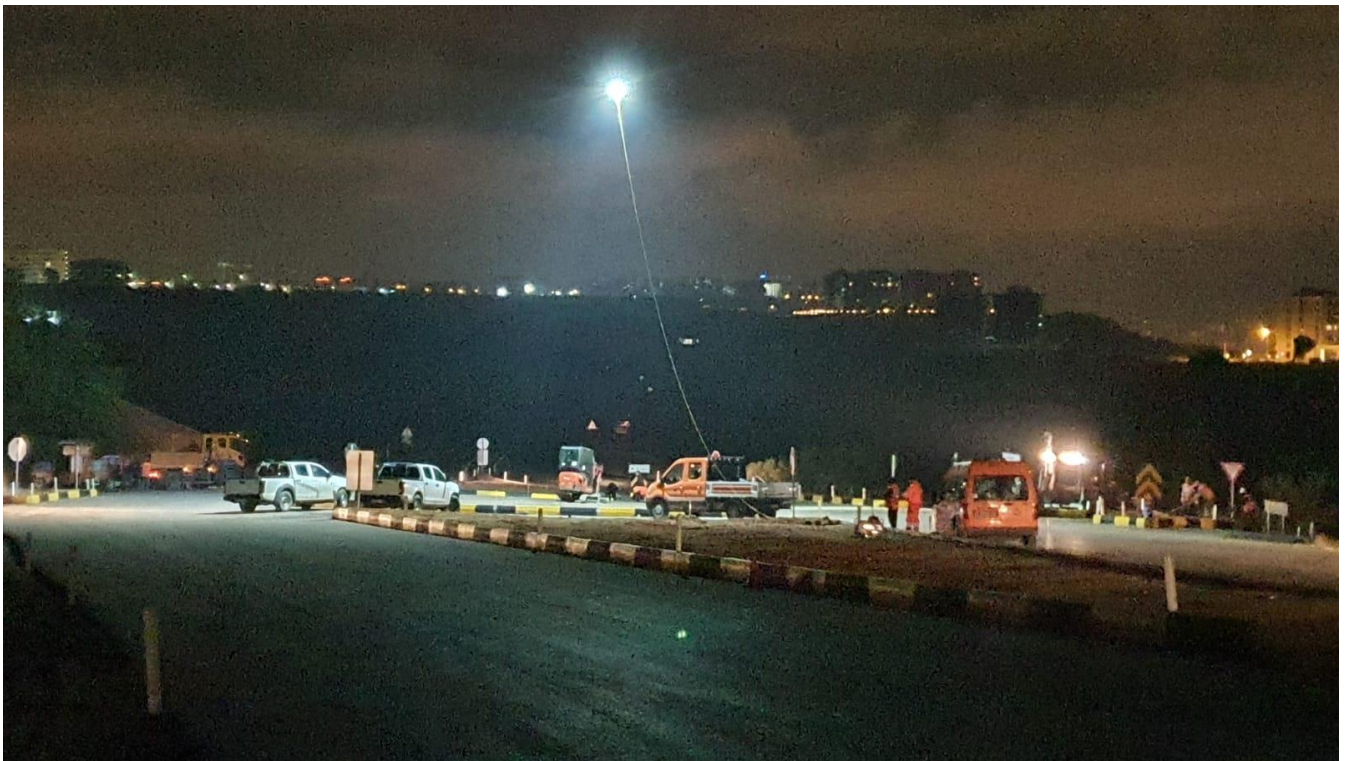


Product Order Information

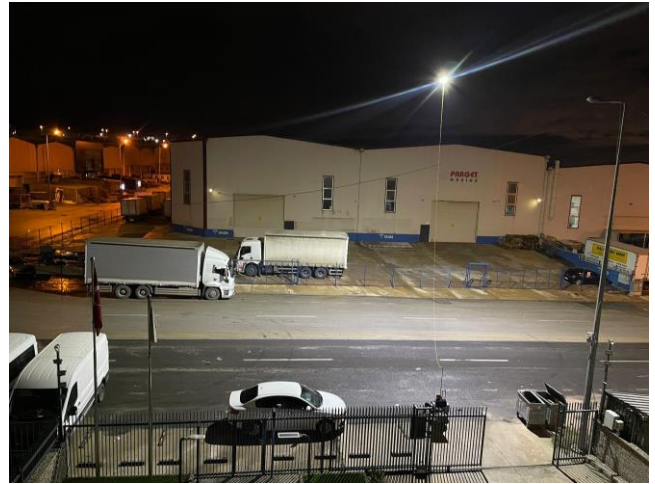
Product Code	Power	Input Voltage	CCT/CRI	Departure Weight	Flight Duration	Dimensions	Cable Length
G5L-04-RW-24-TET-28	450W	220 VAC 50-60 Hz	6500K / 70 CRI	920gr	24s	L60 x W52 x H32 cm	28 m

- *Product average maximum power is 1.1 kW. You can use a generator or portable power station where there is no mains voltage.*
- *You can use the product for at least 1 hour with a 1200W Lithium Battery portable power station.*
- *You can also use it without interruption with a gasoline generator with a continuous power of at least 1.2kW. We recommend a generator due to price/performance and long-term use.*

Application Visuals



Lighting Test



In the illumination test performed by taking our wired illuminated aircraft to an altitude of 10m (AGL), 147lux was obtained on the ground, 68 lux at an altitude of 15m (AGL) and 41lux was obtained in the illumination measurement made while flying at an altitude of 20m (AGL). The visuals of the results of the measurements made with the Luxmeter at 10m, 15m and 20m are as follows.

Lighting Test Results

Height Distance	10meter	15meter	20meter
R0=0	147lux	68lux	41lux
R1=10 metre	50lux	32lux	27lux
R2=15 metre	17lux	14.8lux	15lux
R3=20 metre	7.8lux	6lux	7.5lux
R5=25 metre	2.9lux	3.3lux	3.8lux

