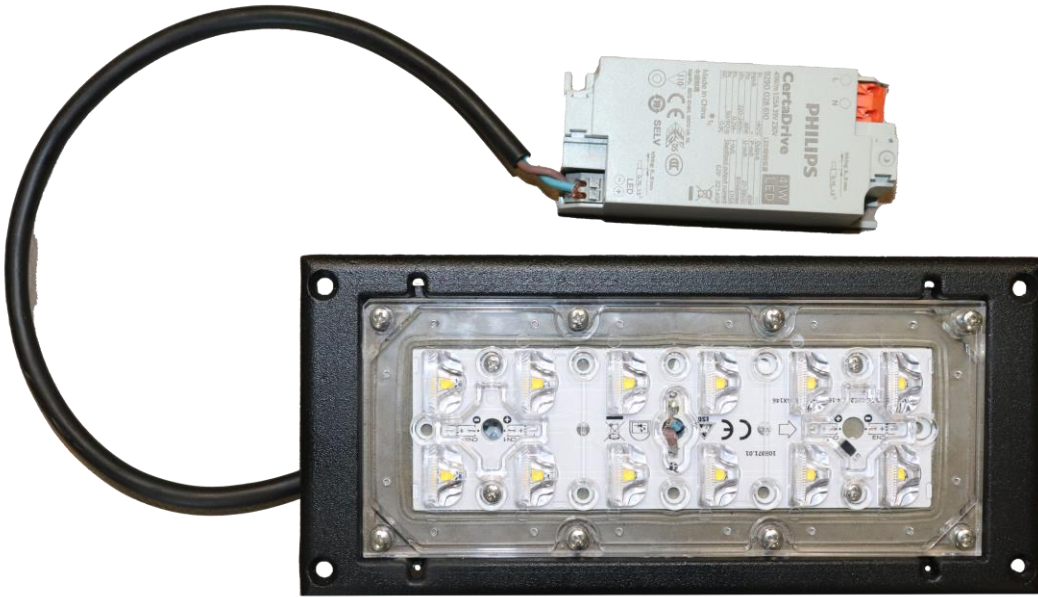


LUMISTAR SECURE BEAM PEDESTRIAN LIGHTING MODULE



General Application Areas



City Lighting



Sea Ports and Parking lot



Parks



Environment and Safety Lighting



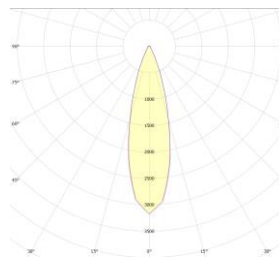
Pedestrian Crossing

General Information

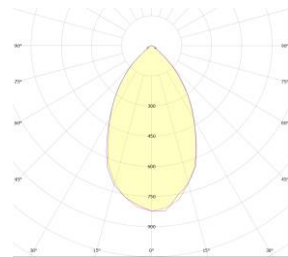
Nowadays, pedestrian pathway lighting is not just about erecting a street lamp, but also about taking advantage of the blessings of modern technology to offer various advantages. Thanks to the development of LED technology, energy-saving and environmentally friendly lighting systems have been developed. These systems provide more light with much lower energy consumption than traditional lighting methods, thus contributing to both the city budget and natural resources.

Pedestrian pathway lighting not only illuminates the streets, but also plays an important role in improving traffic safety. To this end, lighting systems mounted on poles carrying traffic lights have become a critical element to ensure the safety of drivers and pedestrians. Especially in heavy traffic areas and intersections, properly illuminated crosswalks and sidewalks are vital to regulate traffic flow and prevent accidents. Pedestrian path lighting mounted on poles carrying traffic lights attracts the attention of drivers at night, raising awareness of pedestrian priority and thus creating a safer transportation environment in cities.

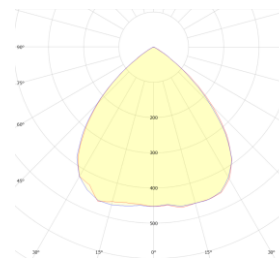
Optical Beam Angles



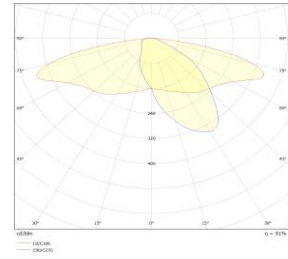
30°



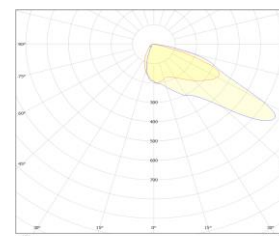
60°



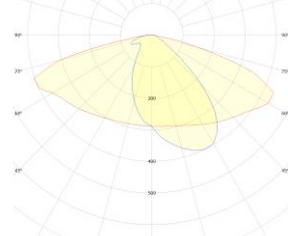
90



ASY



ASY



64° - 150°

LUMISTAR SECURE BEAM PEDESTRIAN LIGHTING MODULE

Technical Specifications

Body	:Aluminum Injection
IP Protection Class	:IP 65
Luminous Flux	:5500 lm
Light Source	:LED
Test Standards	:TS EN 60598-1, TS EN 60598-2-3, TS EN 62031, TS IEC TR 62471, TS EN 60529, TS EN 62262, TS EN 62722-2-1

Optical and Electrical Properties

Power	43W	Light Angle	30°/ 60°/ 90°/ ASY
CE Marks	Yes	Power Factor	>0,9
Optic	PMMA / PC	Max Voltage Withstand	1kV - 4kV (10kV Optional)
Effectiveness Factor	>130 lm/W	Color Temperature	2200K/3000K/4000K/5000 K/6500K
Input Voltage	50/60 HZ	CRI	>70
Total Harmonic Distortion	<%20	Operating Temperature	-25°C / +55°C
Dimensions	210*98*38mm	LED Lifetime	60.000 Hours

Technical Drawing (Side View) and Connection Diagram

