

LUMISTAR HIGH CEILING LUMINAIRE 100W

odak® R&D CENTER
smart city technologies



General Application Areas



City Lighting



Sea Ports and
Parking lot



Parks



Environment and
Safety Lighting

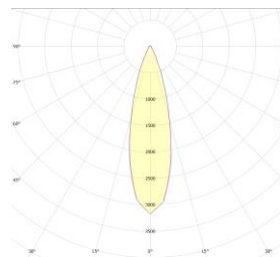
General Information

Lumistar High Bay LED Luminaire is designed for use in industrial plants, warehouses and sports facilities with ceiling heights from 7m to 25 meters.

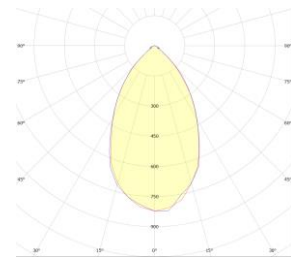
With a high degree of mechanical protection (IK08), water and dust protection (IP66) and proven chemical resistance, Lumistar can perfectly withstand the harsh conditions of industries. It is a very robust, compact and reliable luminaire with excellent light quality. It has 30°, 60°, 90° and asymmetric light distribution options to meet the lighting needs of factories.

With Lumistar series luminaires, you can replace your existing luminaires to fully meet the criteria of efficiency, energy saving, improved light management. At the same time, you can integrate it into your Industry 4.0 works with 1-10V, DALI and KNX automation control possibilities.

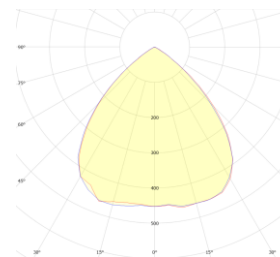
Optical Beam Angles



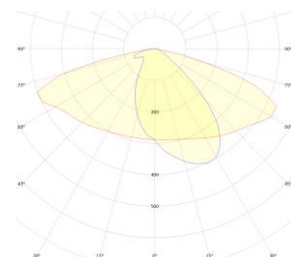
30°



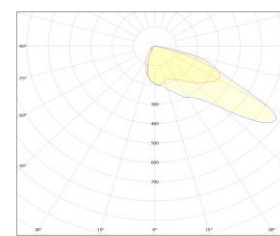
60°



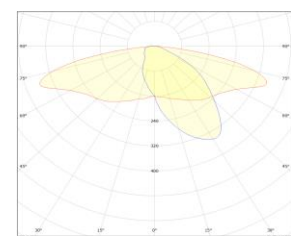
90



64° - 150°



ASY



ASY

LUMISTAR HIGH CEILING LUMINAIRE

100W

odak[®]
R&D
CENTER
smart city technologies

Teknik Özellikler

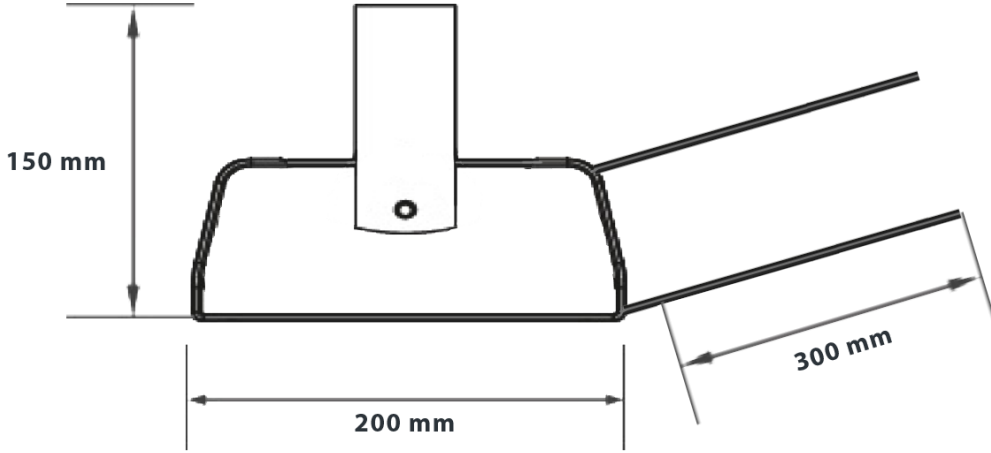
Body	:Alüminyum Enjeksiyon
IP Protection Class	:IP 65
Luminous Flux	:13500 lm
Light Source	:LED
Test Standards	:TS EN 60598-1, TS EN 60598-2-3, TS EN 62031,TS IEC TR 62471,TS EN 60529, TS EN 62262,TS EN 62722-2-1

Optik ve Elektriksel Özellikler

Power	100W	Light Angle	30° / 60° / 90° / ASY
CE Marks	Yes	Power Factor	>0,9
Optic	PMMA / PC	Max Voltage Withstand	1kV - 4kV (10kV Optional)
Effectiveness Factor	>135 lm/W	Color Temperature	2200K/3000K/4000K/5000 K/6500K
Input Voltage	50/60 HZ	CRI	>70
Total Harmonic Distortion	<%20	Operating Temperature	-25°C / +55°C
Dimensions	200*300*150mm	LED Lifetime	60.000 Hours

LUMISTAR HIGH CEILING LUMINAIRE 100W

Technical Drawing (Side View) and Connection Diagram



Product Order Information

Product Code	Power	Effectiveness Factor	Input Voltage	CCT	Luminous Flux	Light Angle	Dimensions
LMS-100BB-00301-865-7016	100W	>135 lm/W	200-240 V AC 50/60 Hz	3000K/4000K/6500K	13500lm	30°	200X300X150mm
LMS-100BB-00601-865-7016	100W	>135 lm/W	200-240 V AC 50/60 Hz	3000K/4000K/6500K	13500lm	60°	200X300X150mm
LMS-100BB-00901-865-7016	100W	>135 lm/W	200-240 V AC 50/60 Hz	3000K/4000K/6500K	13500lm	90°	200X300X150mm
LMS-100BB-ASY11-865-7016	100W	>135 lm/W	200-240 V AC 50/60 Hz	3000K/4000K/6500K	13500lm	ASY1°	200X300X150mm
LMS-100DM-00301-865-7016	100W	>135 lm/W	200-240 V AC 50/60 Hz	3000K/4000K/6500K	13500lm	30°	200X300X150mm
LMS-100DM-00601-865-7016	100W	>135 lm/W	200-240 V AC 50/60 Hz	3000K/4000K/6500K	13500lm	60°	200X300X150mm
LMS-100DM-00901-865-7016	100W	>135 lm/W	200-240 V AC 50/60 Hz	3000K/4000K/6500K	13500lm	90°	200X300X150mm
LMS-100DM-ASY11-865-7016	100W	>135 lm/W	200-240 V AC 50/60 Hz	3000K/4000K/6500K	13500lm	ASY1°	200X300X150mm