

ROSS Infrared LED Floodlight 47W/70W

odak® R&D CENTER
smart city technologies



General Application Areas

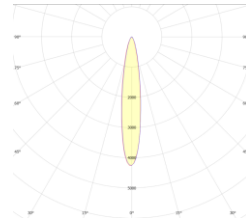


Imaging Systems

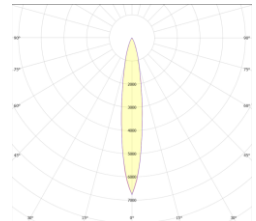


ANPR

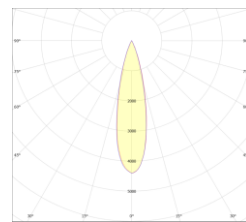
Optical Beam Angles



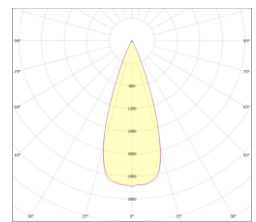
8°



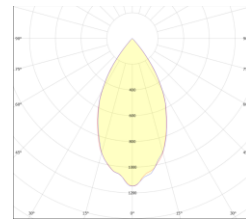
17°



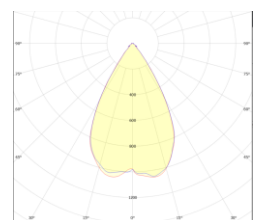
25°



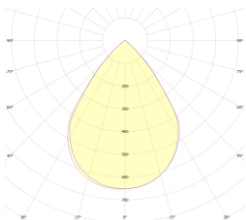
40°



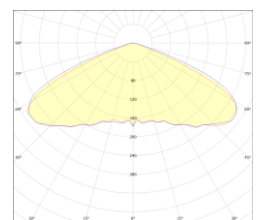
45°



60°



90°



110°

General Information

The Infrared LED Floodlight is an LED-based lighting device used to support imaging systems.

Its energy efficient infrared light has optimized wavelength for night vision. The luminaire body is designed to operate in outdoor conditions.

It has a 10° light angle for speed detection, license plate reading and other highway detection systems. Available in 8°, 17°, 25°, 40°, 45°, 60°, 90° and 110° for different applications.

ROSS Infrared LED Floodlight 47W/70W

Technical Specifications

Body	: Aluminum Injection
Color Options	: Black RAL 9005, Gray RAL 7016
IP Protection Class	: IP 66
Front Cover	: Tempered Glass
Light Source	: LED
Lens	: PMMA
Test Standards	: TS EN 60598-1, TS EN 60598-2-5, TS EN 62031, TS EN 62262, TS IEC TR 62471, TS EN 62722-2-1

Optical and Electrical Properties

Power	47W/70 W	Total Harmonic Distortion	<%20
Wavelength	850 nm	Power Factor	>0,95
Infrared Emission	13 W	Warranty Period	3 Years
Light Angle	8°, 17°, 25°, 40°, 45°, °60°, 90°, 110°	Weight	3,5 kg
Input Voltage	200-240 V AC 50/60 Hz	Dimensions	315x150x70 mm
Throttling Options:	1-10V, TRIAC, DALI		

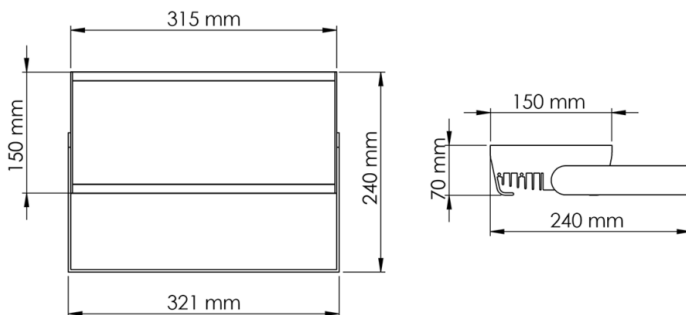
Other Features

Operating Temperature	-25°/+55°C	CE Marking	Yes
Impact Resistance Class	IK 08	RoHS Compliance:	Yes
Lifetime	≥30,000 Hours		

Features

- Ideal for Traffic Application.
- Extra Long Life with Very Low Maintenance.
- IP66 Enclosure for Outdoor Installation.
- Compact with integrated LED Light Source.
- The pulse range is adjustable between 1.6K~30KHz.
- Independent or External trigger
- Support synchronized with video camera (NTSC&PAL)
- Super long range up to 400 m.

Technical Drawing (Side View) and Connection Diagram



Product Variations

Product Code	Power	Input Voltage	Infrared Emission	Wavelength	Dimensions	Weight
RSS-047SM-01101-850-9005	47 W	200-240 V AC 50/60 Hz	9 W	850 nm	315x150x70 mm	3,5 kg
RSS-070SM-01101-850-9005	70 W	200-240 V AC 50/60 Hz	13 W	850 nm	315x150x70 mm	3,5 kg