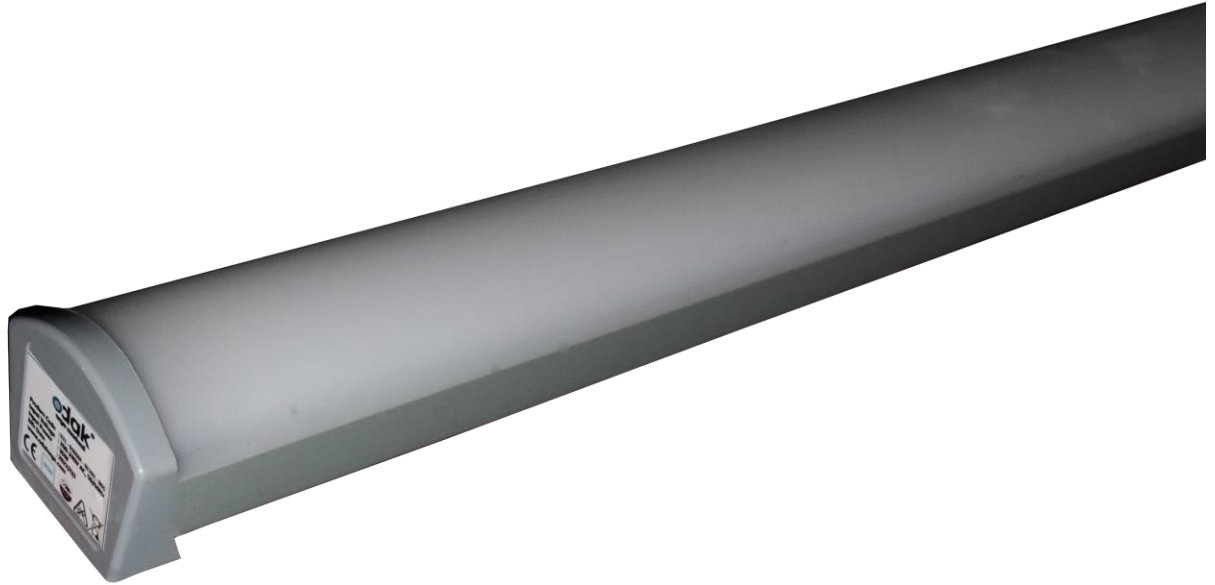


Machine Lighting Fixture 18W



General Application Areas



Closed Parking lots



Industrial Kitchen



Auto Washings

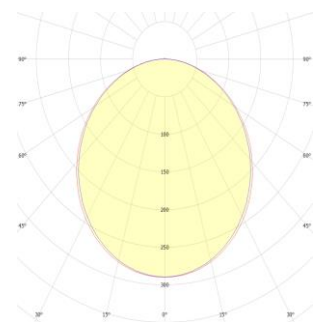


Indoor Sports Halls



Schools

Optical Beam Angles



110°

General Information

Ethanej Luminaires; It is used to protect lighting fixtures from water and moisture in indoor environments such as industrial kitchens, bathrooms, car-carpet washing workshops, baths, laundries, and outdoor areas such as parking lots and gardens where water and moisture are present. Thanks to their durable, slim and stylish design, ethanol luminaires are quick and easy to install. As a direct alternative to traditional fluorescent luminaires, they provide significant energy savings.

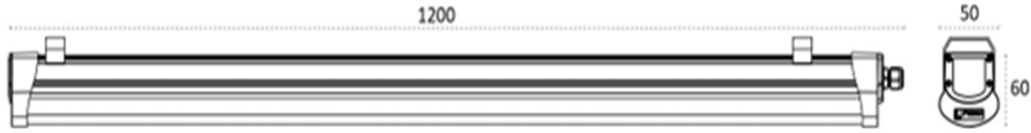
Technical Specifications

Power	:18 W \pm %3
Input Voltage	:200-240 V AC 50/60 HZ
Power Factor	:>0,95
Effectiveness Factor	:120 lm/W
Luminous Flux	:2160 lm
Light Angle	:110°
Color Temperature (CCT)	:6500K
Color Rendering Index (CRI)	:80+
IP Protection Class	:IP 65
Dimensions	:50x60x600 mm
Weight	:0,4 kg
Warranty Period	:3 Years

Optical and Electrical Properties

Body	Polycarbonate Extrusion	CE Marking	Yes
Color Options	Gray RAL 7016	RoHS Compliance	Yes
Light Source	LED	Lifetime	\geq 60.000 Saat
Impact Resistance	IK 08	Throttling Options	1-10V, TRIAC, DALI
Total Harmonic Distortion	<%20	Operating Temperature	-25°/+55°C

Technical Drawing and Connection Diagram



Product Variations

Ürün Kodu	Product Code	Input Voltage	Luminous Flux	Light Angle	Dimensions	Weight
HYD-018SM-01101-865	18W	200-240 V AC 50/60 Hz	2160 lm	110°	60X120X600 mm	0,4 kg