

BETELGEUSE Infrared LED Projector 70W/100W

odak® R&D
CENTER
smart city technologies



General Application Areas

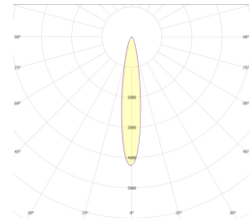


Imaging Systems

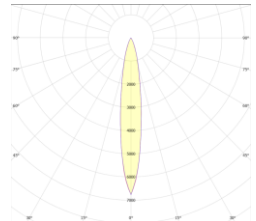


ANPR

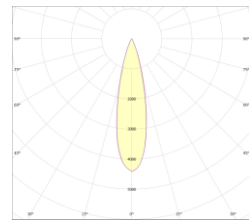
Optical Beam Angles



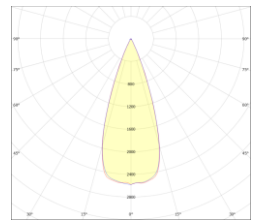
8°



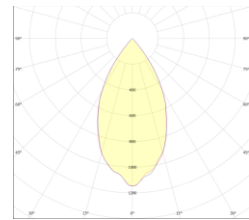
17°



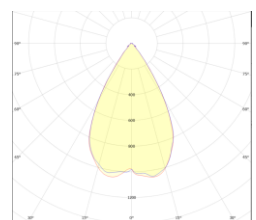
25°



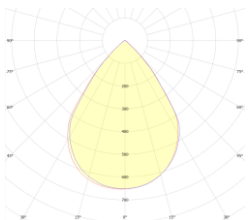
40°



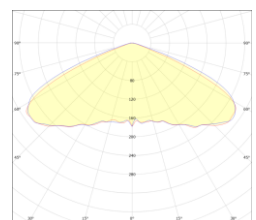
45°



60°



90°



110°

General Information

The Infrared LED Floodlight is an LED-based lighting device used to support imaging systems. Its energy efficient infrared light has optimized wavelength for night vision. The luminaire body is designed to operate in outdoor conditions. It has a 10° light angle for speed detection, license plate reading and other highway detection systems. Available in 8°, 17°, 25°, 40°, 45°, 60°, 90° and 110° for different applications.

BETELGEUSE Infrared LED Projector

70W/100W

Technical Specifications

Body	: Aluminum Injection
Color Options	: Black RAL 9005, Gray RAL 7016
IP Protection Class	: IP 66
Front Cover	: Tempered Glass
Light Source	: LED
Lens	: PMMA
Test Standards	: TS EN 60598-1, TS EN 60598-2-5, TS EN 62031, TS EN 62262, TS IEC TR 62471, TS EN 62722-2-1

Optical and Electrical Properties

Power	70 W/100 W	Total Harmonic Distortion	<%20
Wavelength	850 nm	Power Factor	>0,95
Infrared Emission	20 W	Warranty Period	3 Years
Light Angle	8°, 17°, 25°, 40°, 45°, °60°, 90°, 110°	Weight	7,9 kg
Input Voltage	200-240 V AC 50/60 Hz	Dimensions	330x330x72 mm
Throttling Options:	1-10V, TRIAC, DALI		

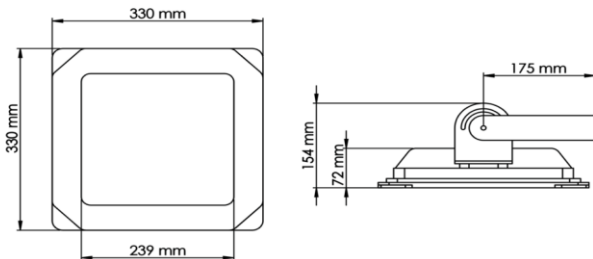
Other Features

Operating Temperature	-25°/+55°C	CE Marking	Yes
Impact Resistance Class	IK 08	RoHS Compliance:	Yes
Lifetime	≥30,000 Hours		

Features

- Ideal for Traffic Application.
- Extra Long Life with Very Low Maintenance.
- IP66 Enclosure for Outdoor Installation.
- Compact with integrated LED Light Source.
- The pulse range is adjustable between 1.6K~30KHz.
- Independent or External trigger
- Support synchronized with video camera (NTSC&PAL)
- Super long range up to 300 m.

Technical Drawing (Side View) and Connection Diagram



Product Variations

Product Code	Power	Input Voltage	Infrared Emission	Wavelength	Dimensions	Weight
BTL-070SM-00082-850-7016	70 W	200-240 V AC 50/60 Hz	13 W	850 nm	330x330x72 mm	7,5 kg
BTL-100SM-00082-850-7016	100 W	200-240 V AC 50/60 Hz	20 W	850 nm	330x330x72 mm	7,5 kg