

BETELGEUSE Infrared LED Projector 70W/100W/125W

odak® R&D CENTER
smart city technologies



General Application Areas

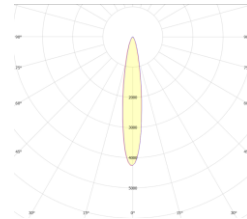


Imaging Systems

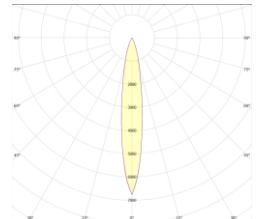


ANPR

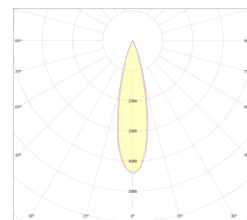
Optical Beam Angles



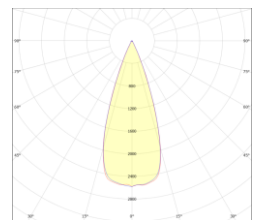
8°



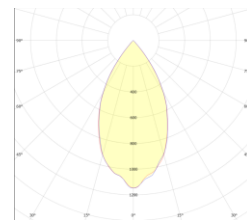
17°



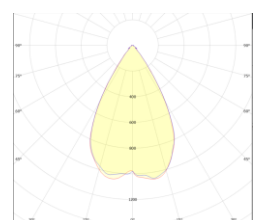
25°



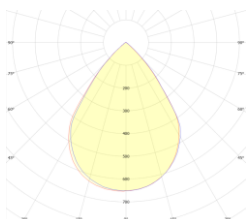
40°



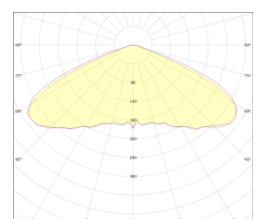
45°



60°



90°



110°

General Information

The Infrared LED Floodlight is an LED-based lighting device used to support imaging systems. Its energy-efficient infrared light has a wavelength optimized for night vision.

The luminaire body is designed to operate in harsh conditions. It has IP66 and IK08 protection.

It has an 8° light angle for speed detection, license plate reading and other road detection systems. Available in 8°, 17°, 25°, 40°, 45°, 60°, 90° and 110° for different applications. Available for ANPR, ALPR for light from 20mt to 200mt.

BETELGEUSE Infrared LED Projector

70W/100W/125W

Technical Specifications

Body	: Aluminum Injection
Color Options	: Black RAL 9005, Gray RAL 7016
IP Protection Class	: IP 66
Front Cover	: Tempered Glass
Light Source	: LED
Lens	: PMMA
Test Standards	: TS EN 60598-1, TS EN 60598-2-5, TS EN 62031, TS EN 62262, TS IEC TR 62471, TS EN 62722-2-1

Optical and Electrical Properties

Power	70 W/100 W/125W	Total Harmonic Distortion	<%20
Wavelength	850 nm	Power Factor	>0,95
Infrared Emission	27 W	Warranty Period	3 Years
Light Angle	8°, 17°, 25°, 40°, 45°, °60°, 90°, 110°	Weight	7,9 kg
Input Voltage	200-240 V AC 50/60 Hz	Dimensions	330x330x72 mm
Throttling Options:	1-10V, TRIAC, DALI		

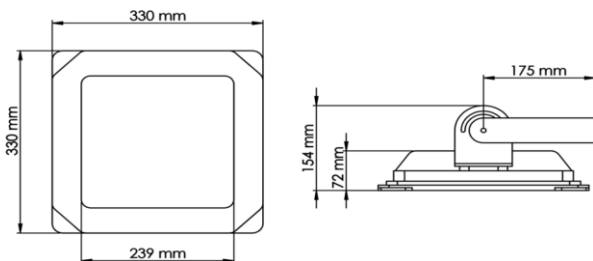
Other Features

Operating Temperature	-25°/+55°C	CE Marking	Yes
Impact Resistance Class	IK 08	RoHS Compliance:	Yes
Lifetime	≥30,000 Hours		

Features

- Ideal for Traffic Application.
- Extra Long Life with Very Low Maintenance.
- IP66 Enclosure for Outdoor Installation.
- Compact with integrated LED Light Source.
- The pulse range is adjustable between 1.6K~30KHz.
- Independent or External trigger
- Support synchronized with video camera (NTSC&PAL)
- Super long range up to 200 m.

Technical Drawing (Side View) and Connection Diagram



Product Variations

Product Code	Power	Input Voltage	Infrared Emission	Wavelength	Dimensions	Weight
BTL-070SM-00082-850-7016	70 W	200-240 V AC 50/60 Hz	13 W	850 nm	330x330x72 mm	7,5 kg
BTL-100SM-00082-850-7016	100 W	200-240 V AC 50/60 Hz	20 W	850 nm	330x330x72 mm	7,5 kg
BTL-125SM-00082-850-7016	125 W	200-240 V AC 50/60 Hz	27 W	850 nm	330x330x72 mm	7,9 kg